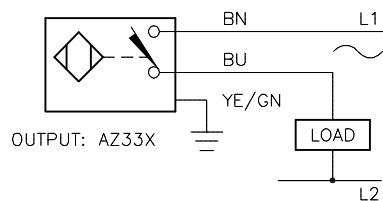
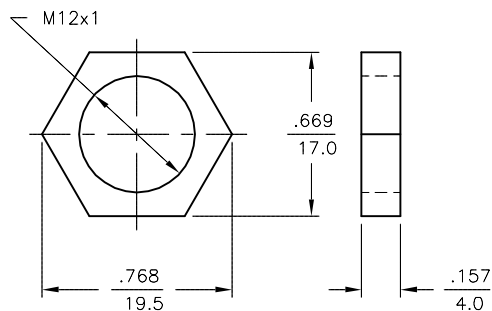


WIRING DIAGRAMS



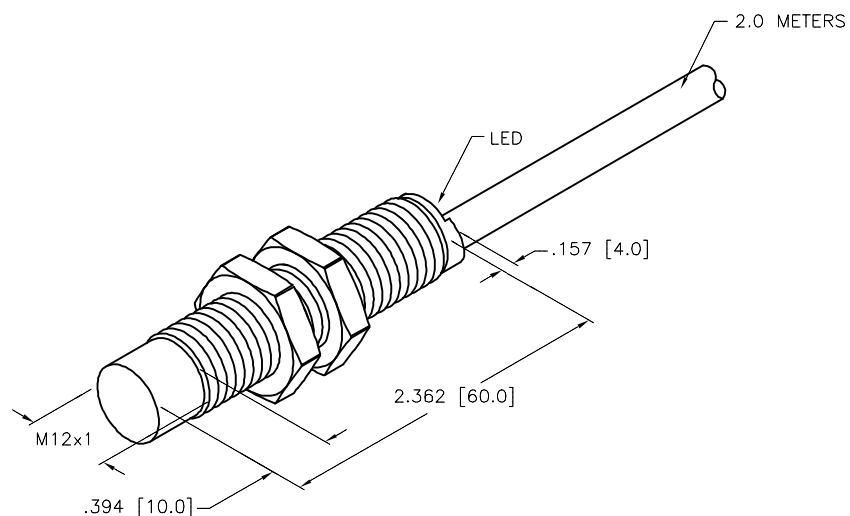
WARNING: NO SHORT-CIRCUIT PROTECTION.
ALWAYS WIRE A LOAD IN SERIES WITH THE SENSOR.

LOCKNUT LN-M12



SPECIFICATIONS

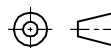
| | |
|-----------------------------|---------------------------------------|
| RATED OPERATING DISTANCE | 4mm = .157" |
| MOUNTING MODE | NON-FLUSH |
| TEMPERATURE DRIFT | ≤±10% |
| HYSTERESIS | 3-15% |
| MIN. REPEAT ACCURACY | ≤ 2% |
| OPERATING TEMPERATURE | -25°C to +70°C (-13°F to +158°F) |
| RATED OPERATIONAL VOLTAGE | 20-250 VAC/10-300 VDC |
| RESIDUAL RIPPLE | ≤ 10% |
| RATED OPERATIONAL CURRENT | ≤ 100 mA |
| RESIDUAL CURRENT | ≤ 1.7 mA |
| RATED INSULATION VOLTAGE | ≤ 0.5 kV |
| SHORT-CIRCUIT PROTECTION | YES |
| MAX. VOLTAGE DROP | ≤ 6 V |
| MIN. OPERATIONAL CURRENT | ≥ 3 mA |
| LINE FREQUENCY | 40-60 Hz |
| MAX. SWITCHING FREQUENCY | ≤ 0.2 kHz |
| OUTPUT FUNCTION | 2-WIRE, NORMALLY OPEN, SELF CONTAINED |
| HOUSING MATERIAL | BRASS/CHROME-PLATED |
| ACTIVE FACE MATERIAL | PLASTIC, PA12-GF30 |
| CABLE | PVC |
| VIBRATION RESISTANCE | 55 Hz (IN ALL 3 PLANES) |
| SHOCK RESISTANCE | 30 g, 11 ms |
| DEGREE OF PROTECTION | IP 67 |
| SWITCHING STATUS INDICATION | LED, YELLOW |



RELATED DOCUMENTS

- 1.
- 2.
- 3.
- 4.

3RD ANGLE PROJECTION



THIS DRAWING IS
CONFIDENTIAL AND THE
PROPERTY OF TURCK
INC. USE OF THIS
DOCUMENT WITHOUT
WRITTEN PERMISSION IS
PROHIBITED.

TURCK INC
High Technology Sensors and Automation Controls

3000 CAMPUS DRIVE
MINNEAPOLIS, MN 55441
1-800-544-7769
(763) 553-7300
(763) 553-0708 fax
turck.com

MATERIAL
SEE SPECS

FINISH
SEE SPECS

ALL DIMENSIONS
DISPLAYED ON THIS
DRAWING ARE FOR
REFERENCE ONLY

CONTACT TURCK
FOR MORE
INFORMATION

DRFT SWC
APVD

DATE 8/2/94
SCALE 1=1.0

UNIT OF MEASUREMENT
INCH [MILLIMETER]

DO NOT SCALE THIS DRAWING

DESCRIPTION

Ni4-G12-AZ33X

IDENTIFICATION NO.

T1304202

REV

E

| | | | | |
|-----|----------------------------|-----|----------|---------|
| E | UPDATE SWITCHING FREQUENCY | RDS | 10/15/12 | 40166 |
| REV | DESCRIPTION | BY | DATE | ECO NO. |

FILE: T1304202

SHEET 1 OF 1